

Henna Fabric Storage Box

Free download pattern using the Beth Studley Henna collection from Makower UK:

Designed by Kellie Rose and Sharon Backler

<https://www.instagram.com/plushaddict/> or visit website www.plushaddict.co.uk

Finished Dimensions 12 ½" x 14 ½" x 12 ½"

INTERMEDIATE LEVEL - Accurate cutting required!

A large storage box suitable for toys, fabrics, magazines, or simply anything you may want to store away. The box fits into the IKEA Kallax shelving & storage system. It is constructed with ultra-firm buckram interlining & has a flip-up base to make sewing a stiff box easier to manage on your sewing machine.



Materials Needed:

Fabric	Useage	Design	Amount
Fabric A	Exterior*		1.10m (1 ¼ yds)
Fabric B	Lining*		1.10m (1 ¼ yds)
Fabric C	Binding and handle		30cm (12")
Interlining	Iron on Vlieseline Bukram S133 45cm wide		1.75m (63 in)
	Fusible Woven Interfacing Vlieseline G700 90cm wide		1.1m (43 in)
Pocket	Clear PVC vinyl for pocket		13 x 9cm (5 x 3.5") Scrap

**A note on fabric requirements - if your fabric width has 43" clear of printed selvedge edges or has non-directional print, and you cut very accurately it is possible to use 75cm of fabric. If you do not require a handle in contrast fabric then this can be cut from both Cutting Layout A & Cutting Layout B. 2.2m of binding is required if you follow this cutting arrangement.*

makower uk

Notes:

- Make sure to visit <http://www.makoweruk.com/projects/> to ensure you are working from the most up-to-date version of the pattern.
- Read through the instructions fully before starting
- ½" seam allowance is used throughout, unless directed.
- Accuracy in cutting & sewing is **very** important for this project to ensure you get an even finish to your box
- For steps using machine sewing, straight stitch, backstitching at the start & end using stitch length 2.5 unless otherwise stated.
- Use a 90/12 needle for sewing the Buckram
- This project uses a zipper foot
- Prepare your fabrics as per manufacturer's care advice
- WST = Wrong Sides Together
- RST = Right Sides Together
- WOF = Width of fabric
- Makower UK provides the written instructions only to accompany the named collection. Retailers are free to use these free instructions to provide a fabric kit. Accurate cutting of fabric is down to the individual retailer and any fabric supply enquires should be directed to point of purchase.

Cutting Instructions

Important Note: It is advisable to label each of your fabric and interlining pieces as you cut them to avoid confusion during construction.

If you are using a directional fabric ensure you mark which way is up on your rectangles (denoted by the arrows in the cutting diagrams on next page). Refer to the cutting diagrams for exterior & lining.

**If your fabric has 43" clear of printed selvedge edges, has non-directional print and you cut very accurately it is possible to use 75cm of fabric and follow Cutting Layout B. Refer to the cutting diagrams on next page.*

Fabric A: For the exterior

Cut One (13 ½" x 15 ½") rectangle for the base panel

Cut Two (13" x 15 ½") rectangles for side panels

Cut Two (13" x 13 ½") rectangles for front & back panels

Fabric B: For the exterior lining

Cut One (13 ½" x 15 ½") rectangle for the base panel

Cut Two (13" x 15 ½") rectangles for side panels

Cut Two (13" x 13 ½") rectangles for front & back panels

Fabric C: for binding & pull out handle

Cut Two (2 ½") WOF strips for binding

Cut One (13 ½" x 5") for pull out handle

Buckram Interlining Vlieseline S133 (available on Amazon)

Cut Three (12 ½" x 14 ½") rectangles for base & sides panels

Cut Two (12 ½" x 12 ½") squares for front & back panels

Fusible Woven Interfacing Vlieseline G700:

Cut One (12 ½" x 4") for pull out handle

Cut One (13 ½" x 15 ¾") rectangle for the base panel

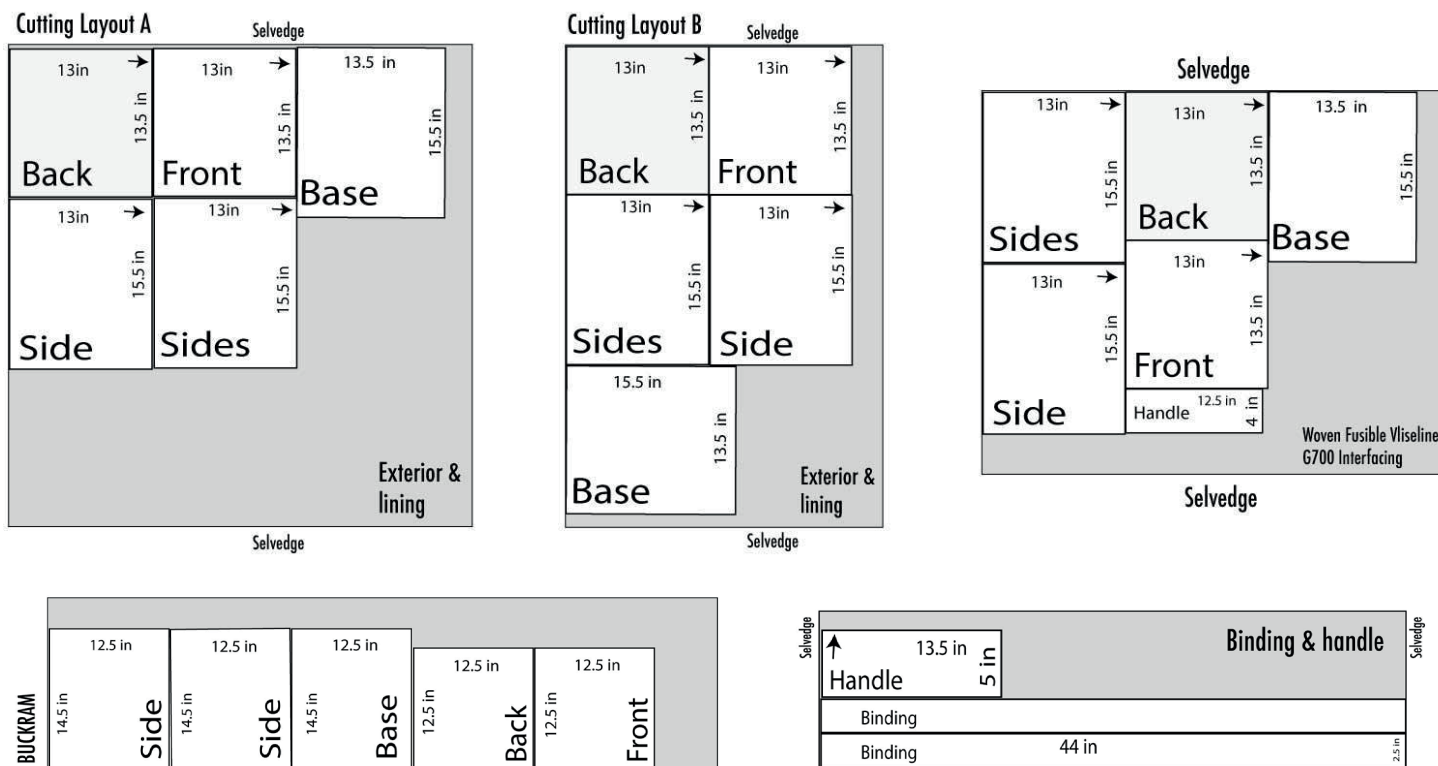
Cut Two (13" x 15 ½") rectangles for side panels

Cut Two (13" x 13 ½") rectangles for front & back panels

Clear PVC vinyl

Cut One (5" x 3.5") Scrap

Cutting Diagrams



Prepare your fabrics:

Prepare the exterior:

1. Aligning the interfacing centrally on the reverse of the handle fabric, fuse the interfacing to the wrong side of the handle fabric. There should be $\frac{1}{2}$ in seam allowance visible around the handle interfacing
2. Fuse the interfacing to the wrong side of all the remaining exterior panels.
3. Take the back, front & side panels of the exterior fabric. Place a notch $\frac{1}{2}$ inch in from both sides, along the bottom edge (fig 1)
4. On the exterior base panel place a notch $\frac{1}{2}$ in from each edge on all 4 sides of the rectangle (fig 1)

Prepare the lining:

5. On the back, front & side panels of the lining panels & buckram, place a notch at the centre of the top edge (fig 2).
6. Adhere the buckram: Matching the notches, place the buckram front panel adhesive side down against the wrong side of the front lining fabric. The top edges of the lining fabric and buckram should be flush together at the top, leaving a $\frac{1}{2}$ fabric seam allowance visible around the other three sides of each rectangle. Using a pressing cloth, fuse the buckram to the wrong side of the fabric with an iron. Repeat for the sides and the back panel (fig 2).
7. Adhere the buckram to the base lining panel: Place the buckram on the centre of the lining fabric base panel with the adhesive side against the wrong side of the fabric. A $\frac{1}{2}$ fabric seam allowance should be visible around all four sides of the base rectangle. Using a pressing cloth, fuse the buckram to the wrong side of the fabric with an iron. (fig 2)



fig 1

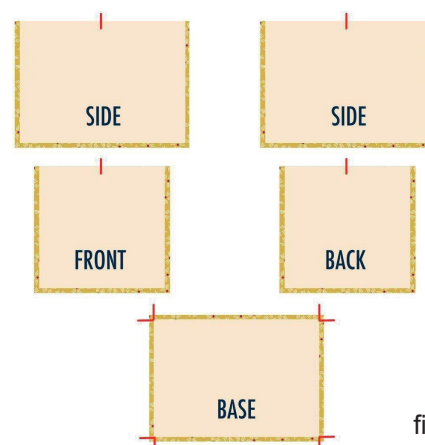
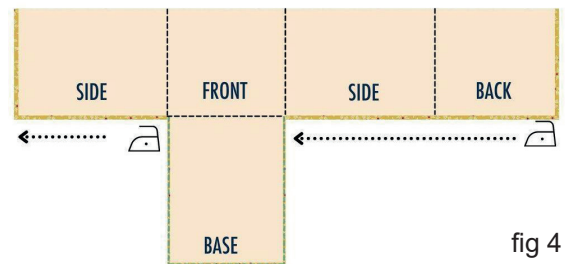
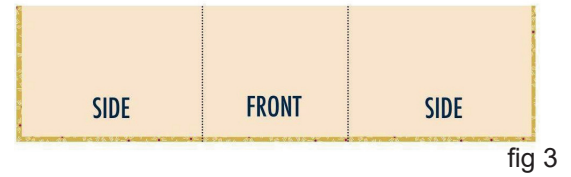


fig 2

Sew the lining:

8. On the base lining panel press the two long sides and one of the short sides to the wrong side of the buckram, leaving one short side unpressed. Stitch the three pressed edges in place through the buckram using a $\frac{1}{4}$ " seam.
9. *Attach the side panels to the front.* Place a zipper foot on your machine. With RST and matching the top edges, sew one side panel to the front panel along the 13" length. Sew just to the side of the buckram through the fabric only and stop sewing $\frac{1}{2}$ " from the bottom seam. Press seams open. Repeat for the other side. You should now have one side panel either side of the front panel (fig 3).
10. *Attach the base panel:* With RST and sewing through the fabric only, sew the one raw edge of the base panel to the front panel along the $13\frac{1}{2}$ " length.
11. *Attach the back panel:* With RST and sewing through the fabric only sew the back panel onto one side panel along the $13\frac{1}{2}$ " length. Your panel should still be flat and one side seam unsewn.
12. On the back and side panels only, press the seam allowance the wrong side of the buckram along the bottom edge. Stitch the pressed seam in place using a $\frac{1}{4}$ " seam. Finish the seam allowance of the sewn front and base panels with a zig-zag stitch (fig 4).
13. Along the bottom edge of your work, press the three remaining raw edges towards the reverse of the buckram and stitch in place using a $\frac{1}{4}$ " seam.
14. Neaten the remaining bottom raw edge with a zigzag stitch.
15. *Sew the final side seam:* With RST and sewing through the fabric only sew the remaining side seam of your lining box.



Sew the exterior:

16. Switch to your regular machine foot.
17. *Make the handle:* Fold the interfaced handle fabric in half WST, matching the long edges and press.
18. Align the long raw edge of the handle with the top front panel placing the handle on the right side of the exterior front panel. Baste in place with a $\frac{1}{4}$ " seam around all three raw edges of the handle.
19. *Prepare the binding:* Matching the short ends, sew your two binding strips together to make one long strip. Press the sewn seam open & make your binding.
20. *Prepare the pocket:* cut the following lengths from your prepared binding:
Two $3\frac{1}{2}$ " strips
Two 6" strips
21. When sewing PVC increase the stitch length to 3-3.5mm to avoid perforation. Place the $3\frac{1}{2}$ " binding strips over the short ends of the PVC pocket fabric. Stitch in place with a $\frac{1}{8}$ " seam. Open out one 6" strip of binding & centrally align the centrefold with the top edge of the PVC pocket. Fold the binding excess at each end in towards the inside of the binding, then fold the top of the binding strip in to encase the PVC. Clip the binding in place & then stitch in place with $\frac{1}{8}$ " seam. Repeat for the bottom edge of the PVC pocket.

22. *Attach the PVC Pocket to the exterior panel:* Place the pocket on the desired place on to the right side exterior panel Ours was in the centre approximately 1 ½" from the top of the box. Pin in place through the binding. Sew the vinyl pocket onto the front exterior front panel leaving the top seam open.
23. *Construct the exterior box:* With RST place one side panel together with the base panel matching the notches on the 15 ½" sides. Pin and sew in between the notches, leaving ½" unsewn at either end. Neaten the raw edges of the fabric with a zig-zag stitch, stitching through the base. This will also add some extra reinforcement to the base of the box. Repeat for the other side panel.
24. Repeat step 23 sewing the front & back panels to the base panel, matching the notches along the 13 ½" sides. Sew between the notches, leaving ½" unsewn at either end. Press seams open.

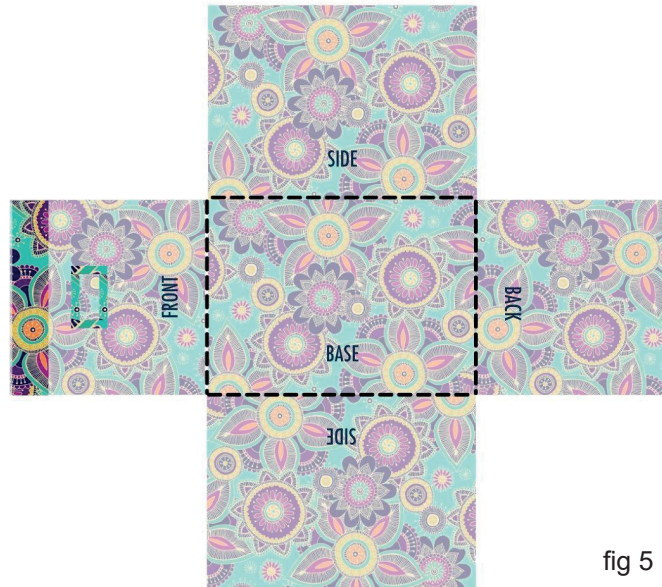


fig 5

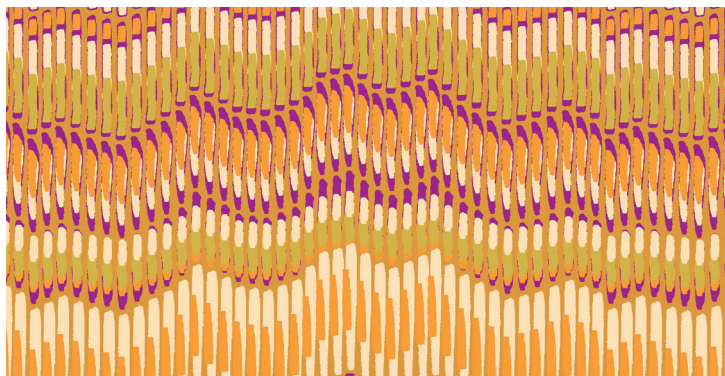
25. With RST, match the front panel with the side panel and sew the seam. Press seams open. Repeat for the other 3 sides of the exterior box. Turn right sides out.
26. *Attach the binding to the exterior box:* Open out the binding and, starting at the back of the box, match and pin the long raw edge of the binding to the top raw edge of the exterior box leaving an unpinned binding overlap of approx 6". Sew the binding to the exterior along the first crease line, leaving approx 3" of the binding unsewn. Press one binding tail back on itself, WST. Fold the other binding tail so both folds in the binding tails meet. Match the two fold creases RST and stitch along the folded line. Trim back the seam to ¼" and stitch the remaining binding on the exterior box, closing the gap left earlier. Trim any stray threads around your sewn binding
27. *Assembling the box:* Turn the exterior fabric box right sides out. With wrong sides matching, ease the exterior box over the lining box, matching all edges and corners, and ensuring the top edges are aligned. Pull the binding over the top edge of the box and clip in place ensuring the fabric is taut. Hand sew the binding along the folded edge on the interior of the box



2390/T

Henna

"New Henna is a revisitation of my popular first collection. It has been a fun opportunity to rework some of my favourite prints from the last few years and build them into something new. The main 'Henna' design is largely unchanged, but with the addition of dusky yellow and purple shades to the palette. It has been great fun playing with unexplored colourways and designs, that have not been previously used together, to create a new collection. This is something I always love to do when dipping into my stash of all my old fabrics." For further info visit lovefrombeth.com



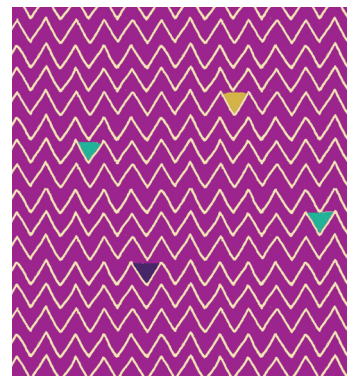
2397/Y

Moire Stripe



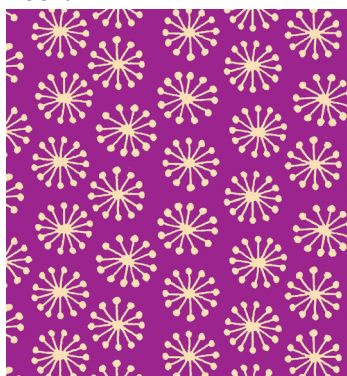
2391/L

Dash Flower



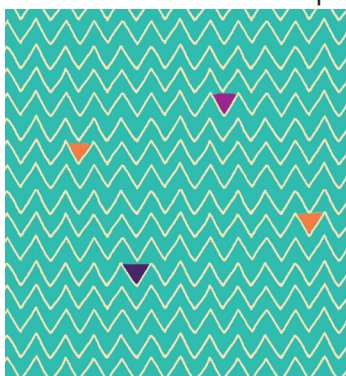
2396/P

Zig-Zag



2393/P

Pop



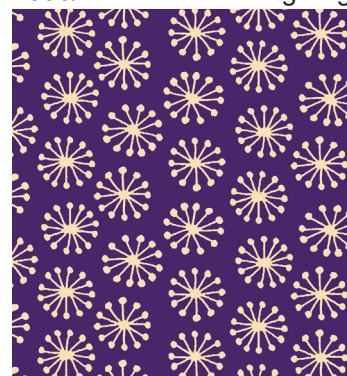
2396/T

Zig-Zag



2394/Y

Star



2393/L

Pop



2392/YP

Sunflower



2394/L

Star



2395/P

Medallion



2391/Y

Dash Flower



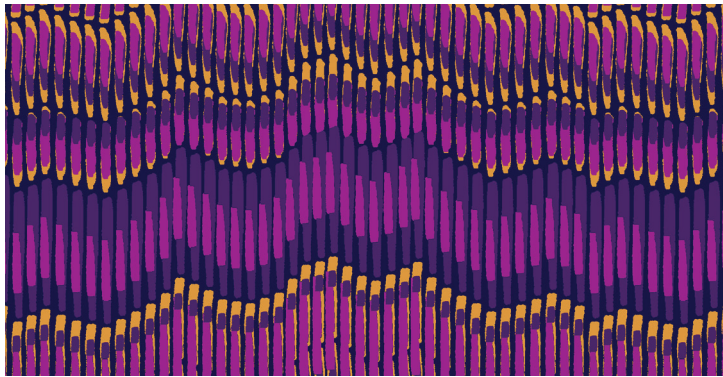
2390/Y

Henna



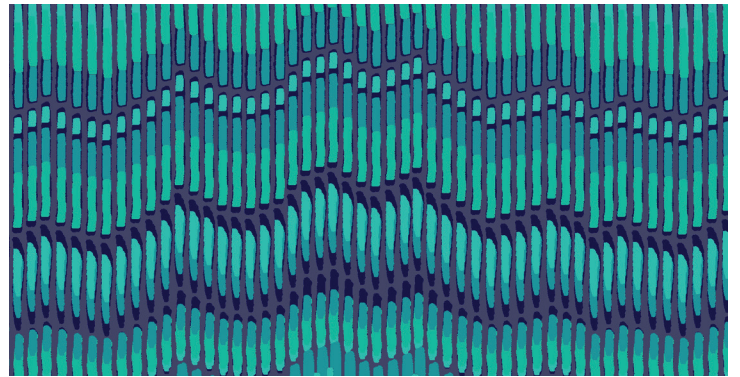
2390/L

Henna



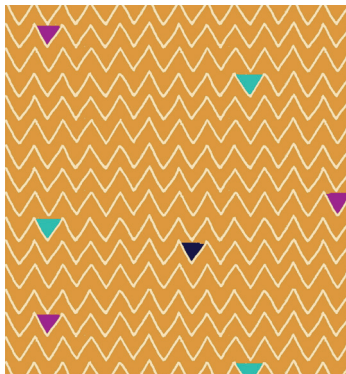
2397/P

Moiré Stripe



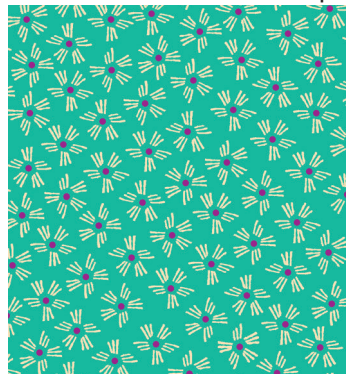
2397/T

Moiré Stripe



2396/Y

Zig-Zag



2391/T

Dash Flower



2393/N

Pop



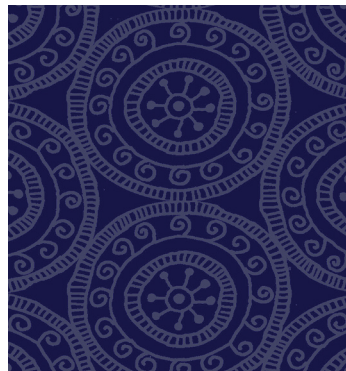
2394/P

Star



2392/TY

Sunflower



2395/L

Medallion



2392/TL

Sunflower



2395/T

Medallion